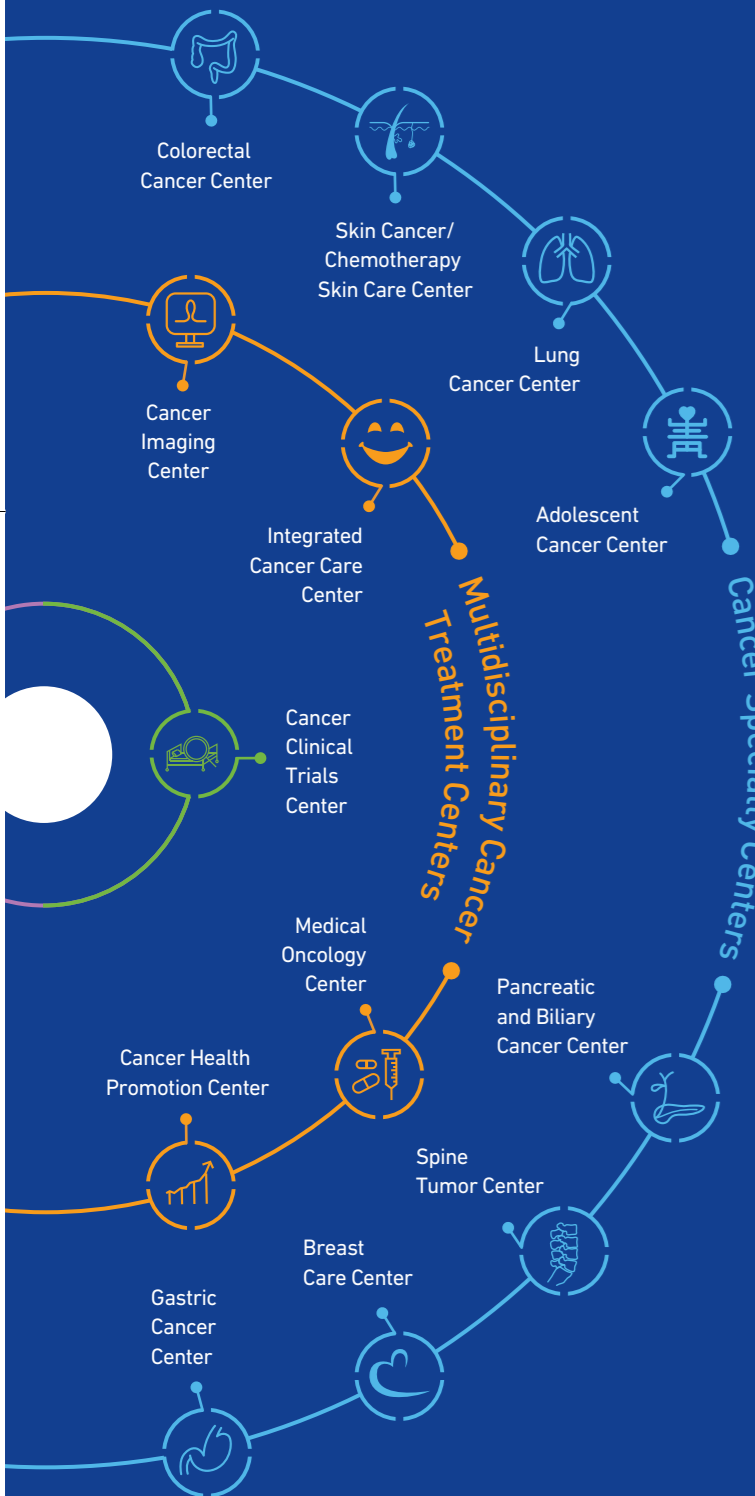


Cancer Specialty Centers **16** + Multidisciplinary Cancer Treatment Centers **10** + The Cancer Edu-Info Center **01** + The Cancer Clinical Trials Center **01**

SNU Cancer Hospital is composed of **28** specialized centers.



For Appointments

Appointments could be reserved through telephone, the internet, fax, and visit.

Reservation via Telephone

TEL. 82-2-2072-0505

Weekdays - 9 AM to 5:30 PM

Saturday - 9 AM to 12 PM

Reservation through the Internet

Enter "www.snuh.org/english" to a search window → Click "Appointment" on the main page

Reservation via Fax

FAX. 02-2072-0823

Have the personal information of the patient (the name, resident registration number, address, and contact number), visiting department, and the request for optional care ready → Send us the information and referral document via fax

※ We will give you a call back to confirm the reservation for a fax requests.

Reservation by Visit

Visit the International Healthcare Center on the 2nd floor of the SNUH main building.

QR Code for SNU Cancer Hospital Website

Please use the QR code on the right to learn more about SNU Cancer Hospital.



A Must-Read for Cancer Patients!

'All Things You Need to Know about Cancer'

A must-read for cancer treatment and health management! Read and view the easy-to-learn videos and QR codes.

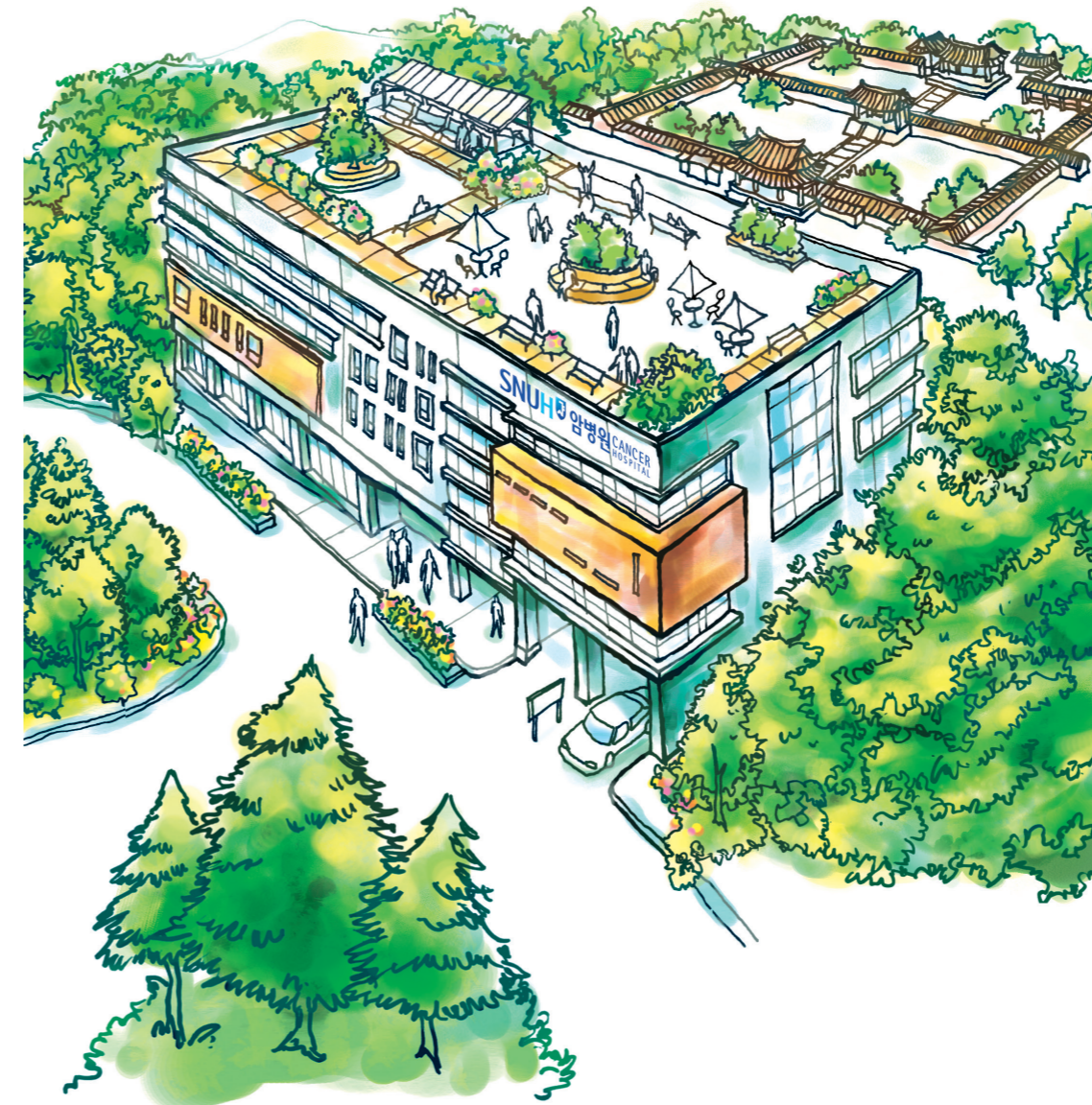
[Available at]

! Off-line book store: Convenient stores at SNU Cancer Hospital

! On-line book stores: Major domestic online bookstores and Seoul National University Press website



SNUH CANCER HOSPITAL



Your **FIRST** Hospital

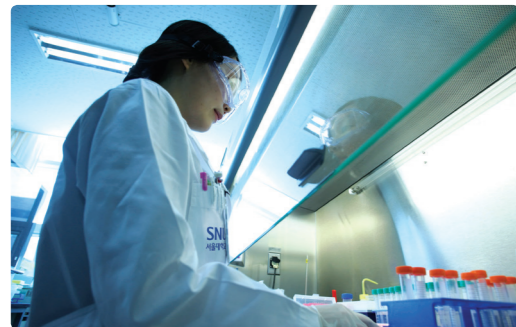
- F**riendly → Patient-friendly and patient-oriented medical care system
- I**ntegrated → Integrated medical care with the best medical team
- R**esearch-based → World-class research-driven hospital focusing on anti-cancer drug development
- S**mart → Medical services with state-of-the-art IT
- T**rustworthy → Trustworthy medical team providing standardized advanced treatment



Research-Based Cancer Hospital Leading Global Cancer Treatment



Second-to-None in Clinical Trials and Research



The level of research activity at SNU Cancer Hospital is beyond comparison. In particular, SNU Cancer Hospital has conducted the largest number of clinical trials in Korea, and is recognized as leader in clinical trials globally. In 2013, SNU Cancer Hospital was No.1 in the world for the number of clinical trials conducted in a single institution. SNU Cancer Hospital is also leading the development of new anti-cancer drugs from

this infrastructure. Center for Cancer Research Collaboration (CCRC) at SNU Cancer Hospital is promoting translational research by active collaboration of bench-side and bed-side. Passion for translational research among the professors affiliated to SNU Cancer Hospital is reflected by the fact that majority have active participation in research and have own laboratories under operation in the SNU Cancer Research Institute or other institutes.

Since its designation as one of the "Research-Driven Hospitals" by the Ministry of Health and Welfare in 2014, SNU Cancer Hospital have developed various cancer panels (cancer genome diagnosis method). SNU Cancer Hospital is striving to bring the bench-side research efforts to the bed-side accomplishment.

Outstanding Accomplishments of Individual Centers

Each centers of SNU Cancer Hospital has recorded outstanding clinical accomplishments.



Liver Cancer Center

First successful liver transplantation in Korea; First in the world to verify the role of immunotherapy by reduced recurrence and increased survival



Colorectal Cancer Center

First successful laparoscopic colorectal resection in Korea; More than 1,000 surgeries performed annually



Gastric Cancer Center

Over 20,000 gastric cancer surgery cases in 2007; About 1,000 gastric cancer surgeries and 550 laparoscopic / robot-assisted surgeries performed annually



Breast Care Center

Over 10,000 breast cancer surgery cases in 2011; Breast-conserving surgery applied to more than 70% of the patients



Lung Cancer Center

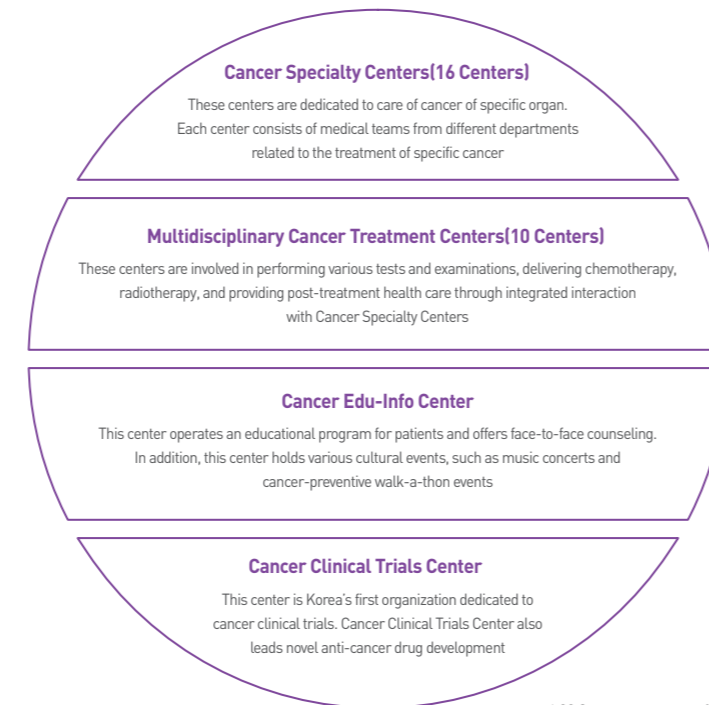
Lung cancer peri-operative mortality of 0.57%; Thoracoscopy applied to around 80% of lung cancer surgeries

Collaborative Cancer Hospital for Optimal Care



Center-based, Not Department-based Approach

The care for cancer patients at SNU Cancer Hospital is based on cancer centers, not departments. Because we believe an effective cancer care requires multidisciplinary collaborative effort of all specialists involved throughout various departments. The 28 centers constituting the Cancer Hospital are classified as follows.



FIRST Integrated Clinic



SNU Cancer Hospital implements 'FIRST Integrated Clinic' where specialists of various fields discuss the care for each patient. Since cancer requires complicated treatment procedures compared to other diseases, collaboration among specialists of various fields is mandatory. The multidisciplinary clinic saves time for patients by avoiding the inconvenience of visiting doctors in various departments. The multidisciplinary clinic also helps clinicians to make more timely and sound decisions by on-spot review of the opinions from various participating specialists.

Quick Cancer Hospital Enabling Same-Day Appointments and Tests



Introduction of Outpatient-Centered, Short-Term Admission System

SNU Cancer Hospital has introduced an outpatient-centered and short-term admission system to minimize unnecessary hospitalization and avoid long waiting line for admission care. Procedure or an injection requiring less than six hours of hospital stay are carried out at the "Procedure Room" or the "Injection/Treatment Room." Those requiring more than 6 hours but less than 12 hours are handled at the "Oncology Day-Care Center." Cancer patients requiring admission care for tests and procedures are admitted to the "Short-Term Ward".

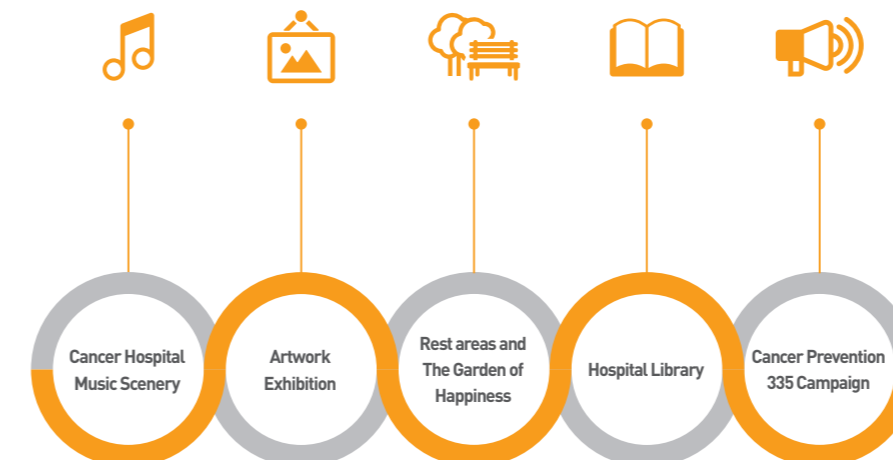
Breast Care Center Outpatient Clinic, the Cancer Imaging Center, Minor Operation Rooms, and Payment Counters are located on the second floor, the Annex Ward on the third floor, and the Outpatient Thyroid Center on the fourth floor of the Children's Hospital Annex for more integrated care of breast and thyroid patients.

Same-Day Appointments and Tests

SNU Cancer Hospital offers same day appointment for the new patients or first-visit patients. Various tests are available on the same day, as well, thanks to up-to-date automated system for optimal efficacy and accuracy. Designated nurse in each outpatient clinic provide more efficient and coordinated care to the patients.

Comprehensive Care in Entire Journey of Cancer Care

SNU Cancer Hospital seeks to provide care beyond disease and to a whole person by offering a caring environment. SNU Cancer Hospital supports comprehensive care for patients to lead a healthier life, both physically and mentally, throughout the entire treatment process and beyond, by providing customized cancer information and education for patients and their loved ones. SNU Cancer Hospital is also making efforts to be a warm-hearted hospital by nurturing the emotional aspects of patients through culture and arts.



Smart Cancer Hospital Providing High-End Treatment



Focusing on Personalized Cancer Care through Precision Medicine and Genomics

SNU Cancer Hospital is making earnest efforts in precision medicine. SNU Cancer Hospital provides cancer genome panel tests for major cancer types to provide personalized guideline for specific cancer treatment. SNU Cancer Hospital is also playing a leading role in the discovery of novel biomarkers and development of target drugs through established cancer patient genetic mutation database.

State-of-the-Art Diagnosis and Treatment



For the first time in Korea, SNU Cancer Hospital has introduced ViewRay[®] MRIdian[®] system. ViewRay[®] MRIdian[®] system provide tumor location and size information through real-time MRI imaging with synchronous radiotherapy delivery. Unlike conventional radiotherapy machines, which requires extra margin to compensate tumor movement due to breathing and other motions, ViewRay[®]

MRIdian[®] system is capable of delivering real time MRI guided gated treatment, minimizing radiation to neighboring healthy tissues. SNU Cancer Hospital was the fourth in the world to adopt the ViewRay[®] MRIdian[®] system. SNU Cancer Hospital also has other advanced devices, such as PET-CT, PET-MRI, SPECT-CT, and cyclotron.

SNU Cancer Hospital is

SNU Cancer Hospital is a customer-centered hospital where optimal care is provided in a convenient and rapid manner through Korea's best healing art and a personalized care system. SNU Cancer Hospital provides the same-day appointments and tests, center-based outpatient clinic, Oncology Short-Term Ward, FIRST Integrated Clinic, designated nurse service, world-class oncology clinical trials, and customized cancer information and education.